

March 27, 2025



Steeple Views

FIRST PRESBYTERIAN CHURCH, MARTINSVILLE, VA

Pastor's Corner

Pastor Bea Miller

Dear First Presbyterian family,

In Sunday's scripture, Jesus reminded us that repenting is a life-giving process. And we talked about the gifts of a good apology. This week I found a list of "Nine Essential Ingredients of a True Apology" by Dr. Harriet Lerner, author of *Why Won't You Apologize?*. Please let me know your thoughts about this list.

Nine Essential Ingredients of a True Apology

1. Does not include the word "but"
2. Keeps the focus on your actions and not on the other person's response
3. Includes an offer of reparation or restitution that fits the situation
4. Does not over do
5. Doesn't get caught up in who's more to blame or who started it
6. Requires that you do your best to avoid a repeat performance
7. Should not serve to silence
8. Shouldn't be offered to make you feel better if it risks making the hurt party feel worse
9. Does not ask the hurt party to do anything, not even to forgive

Relationships that are grounded in trust and safety require the difficult, life-giving work of open and honest communication ~ including heartfelt apologies. May God bless us in all the ways we seek to repair and restore relationships as we repent and live.

Peace be with you,



Please join us for the fourth Sunday in Lent at 10:00 AM

Sermon by Pastor Bea

based upon Psalm 100

Usher/Greeters: Monty & Joan Montgomery

Liturgist Schedule

April

8 Billy Kirby

13 no liturgist needed - Palm Sunday in the park, followed by potluck brunch

20 Sam Smith (Easter)

27 Susan Pilson

May

4 Ashby Pinkard

11 Lynn Pritchett

18 Ron Rebman

25 Martha Rollins

June

8 Randy Rollins

15 no liturgist needed

22 Joe Williams

CHURCH OFFICE HOURS

Monday - Thursday 9:30am - 4pm

Friday 9:30am - 2pm

Be Aware!

**Protect yourself
from scammers!**

Watch for emails, texts or calls that might be fraudulent and do not trust communications (even if they sound legitimate) that ask for personal information, money or gift cards.

You will NEVER get an email from the church or your pastor asking you to purchase gift cards because we are busy or in a meeting.



ANNOUNCEMENTS
& UPCOMING EVENTS

This Sunday will be a Music-fest where members of the congregation will share their talents during the service.

Lenten Lunches will be held on Thursdays at 12 Noon and will include a light meal and a short devotional. These are the locations for each week:

- **April 3** at First Presbyterian; devotional – Andrew Tamingler from Holy

Trinity Lutheran

- **April 10** at First Baptist East (1043 Church St.); devotional by Charles Whitfield
-



Job Opportunity: Preschool Director. First Presbyterian Church Martinsville is seeking a dedicated Preschool Director for our program serving children ages 1-4. This part-time position requires a BA/BS degree and offers a wonderful opportunity to lead and inspire young learners in a nurturing environment. Early drop-off and late pickup options are available for our families. Interested candidates should send a letter of interest detailing your qualifications to ritaofficefpc@gmail.com. For more information, please visit our church website. Join us in making a difference in the lives of our youngest members of the community! If you know of anyone whom you think may be interested, please share this opportunity with them.

Palm Sunday in the Park - Sunday, April 13th at 9:00 AM at the J. Frank Wilson Park. Angela Zimmerman of Starling Avenue Baptist Church will be the speaker. Park at First Presbyterian if you want to walk. Buses will be available at First Baptist for those who prefer to ride. A potluck bunch will follow the service in the FPC fellowship hall. There will be no 10:00 AM worship service.

Weekday School News

The Weekday School is currently taking pre-registrations for the 2025-2026 school year. It is hard to believe, but this school year is flying by!!

Please help us by spreading the word about our wonderful school and terrific teachers to anyone you know who has children ages 1 to 4.

We have classes for 1, 2, 3, and 4 year old children.

Our preschool is from 9:00-12:00 Monday-Friday. We also have Early Drop Off which begins at 7:45 a.m. and Lunch Buddy programs that end at 2:00 p.m. for families who need longer hours.

Carol Carter
Director

Community Worship:

June 8 FPC Martinsville

July 13 FPC Collinsville

August 10 Forest Hills

September 14 Grace

Update from the Administration Committee

Happy St. Patrick's Day!

On Sunday (March 16), I did a minute-for-mission as part of our ongoing efforts to keep the congregation up to date on our financial picture. For those whomissed it shame on you... I was amazing. All kidding aside, below I will attempt to summarize the message from Sunday.

At this point last year we discussed the 2024 budget and spent time onour income, the sources of that income and our expenses. This year we again reviewed our income and expenses as they relate to the 2025 budget but also in the context of the last few years.

I will mention at the outset that we are again balancing our budget with endowment funds and that number has increased. In addition, the budget does NOT include one-time facility improvements such as the elevator and roof. Those will be additional drains on the endowment.

Let's look our EXPENSES first...

I'm sure this will come as a big shock to all of you but... expenses continue to increase.

Over the past several years our "actual" expenses have increased roughly \$39,000 year over year. The 2025 budget anticipates total expenses of \$536,354. My hope is that we have overestimated what our actual expenses will be. All of our committees continue to do a tremendous job keeping costs down but people and buildings are expensive. If trends hold true we will again come in under budget.

Our income, as it stands now, is comprised of three main components...

1. Contribution income – think pledges and offerings;
2. Misc. income – more on that below;
3. Endowment income – money we take to balance the budget

In 2024, we received \$266,584 in pledges (A big thank you to everyone reading this) versus a budgeted figure of \$220,770. That is great!

We have budgeted for pledges of \$220,770 (same as last year). Again, last year we beat that by \$45,000 or so. No pressure... ok, maybe a little pressure.

Also, a significant portion of what has been pledged in 2025 has come in early. That is helpful because it delays having to take from the endowment at a point when the investment portion of our portfolio is down. Again, thanks to all of you.

Misc. income if you will remember was higher last year (2024) because of the ERTC money. That was the money we got for keeping staff employed during the pandemic. We will not get the same bump as last year as most of these funds have been received.

That leaves the money we need to take from the endowment in order to balance the budget. We anticipate taking \$257,105. This represents an increase in what we budgeted for and took last year.

I don't have the latest Endowment figure but I know the last few weeks have been rocky.

All in all I still remain bullish from where we were two years ago. Committees continue to do a good job keeping expenses down, we continue to explore alternative ways to make the building pay for itself, you folks continue to amaze with your generosity, and the trustees are taking a proactive approach to the endowment.

Keep up the good work and thank you!

Congregational Care and Fellowship

If you are in need of a [prayer shawl](#), or know someone that could use one, please pick one up from the narthex and be sure to sign it out. If you have any questions, please reach out to **Susan Pilson**.

If you are in need of prayer, a meal, transportation, etc...due to a death in the family or the birth of a baby, please reach out to the Congregational Care and Fellowship committee by contacting **Susan** at [276 340-7288](tel:2763407288).

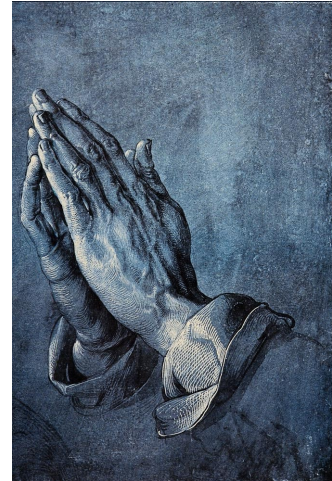
Happy Birthday in April!

- 4** Max Pinkston
 - 5** Kathryn Judson
 - 7** Bob Davis
 - 9** Pastor Bea Miller
 - 14** Judy Garland
 - 15** Briana Tatum
 - 17** Barbara Tatum
 - 20** Manly Boyd
 - 22** Matthew Price
 - 30** Lynn Pritchett, Will Kirby
-

These members and friends of the congregation need our prayers:

PRAYER CONCERNS

Family of Betty Lou Pigg, Anne Abercrombie, Sue Benfield, Jackie Bloxom (P. Stanley), Bud Buffkin, Evelyn Cannaday, Joel Christman (B. Stanley), April Cox (B. Tatum), Nancy Davis, Jerri DeVault, Marge Dunn, Martin Ford, Doug Goldstein, Marvin Hudson, Jamelle Waid Linker (Ed Linker's daughter-in-law), Mary Manning, Jackie McLachlan, Maggie Pilson, Rusty Reaser, Cecil Robbins, Susan Rosser, Becky Stone Sawyers (L. Pritchett), Dee Moore Smith, Betty Stanley, Laura Stevens, Scott Stevens, Bruce Thomas, Carl Utley, Lil Wall, Tammy Tucker Wardinski, Jodi White (sister of P. Marshall/G. Chaney), persecuted Christians, military service men and women, missionaries, and all refugees and immigrants forced to flee their countries. Areas and families affected by Hurricanes Helene and Milton and wildfires in California.



Grace Network Donations

**[2nd quarter 2025 food donation item is
Creamed corn 15 oz](#)**



Please consider donating extra when you are able to get out and about as your donations will become more important than ever.

ALSO in need of plastic grocery bags and empty egg cartons (any size).
These can be deposited in the bins inside the Narthex

Hygiene Items are always needed (optional)

- *Toilet Paper
- *Bath Soap
- *Dish Detergent
- *Feminine Products
- *Deodorant
- *Toothpaste
- *Laundry Detergent

**Items may be brought to the church or dropped off at Grace Network, Monday - Friday, 9-2 PM*



Steeple Views Reminder

FIRST PRESBYTERIAN CHURCH, MARTINSVILLE, VA

Steeple Views is published weekly on Thursdays. **DEADLINE** for submission of articles is Wednesday evening.

If you have information you want included in Steeple Views, **PLEASE SEND TO:** fpcsteepleviews@gmail.com. For time sensitive announcements, please send to skirbycwj@gmail.com

We reserve the right to edit all submissions. Sharon Kirby, Editor



For updates and announcements, please click on the link below or copy and paste into your web browser:

<https://www.peakspresbytery.org/peaks-postings/>

Our Mission

Share God's Love, Embrace Our Neighbors, Nurture Each Other

Printed copies of *Steeple Views* are available at church. Current and back issues are also on our website:

www.firstpresbyterianmartinsville.org/page.cfm/topic/newsletter

Useful Links

FPC website:

www.firstpresbyterianmartinsville.org/ or www.fpcmartinsvilleVA.org/

FPC online directory: members.instantchurchdirectory.com/

FPC Facebook page: www.facebook.com/FPCMartinsvilleVA

Presbytery of the Peaks: www.peakspresbytery.org/

Presbyterian Church (USA): www.pcusa.org/

Daily Bible Readings: www.presbyterianmission.org/devotion/daily/

Church Office Phone: [276-632-3431](tel:276-632-3431)

Our mailing address is:

First Presbyterian Church

1901 Patrick Henry Ave.

Martinsville, VA 24112

STAFF

Rev. Bea Miller, Interim Pastor, rev.millerb@gmail.com

Rita Bateman, Secretary/Office Manager, office@fpcmartinsvilleVA.org

Vickie Blair, Bookkeeper, bookkeeper@fpcmartinsvilleVA.org

Carol Carter, Weekday School Director, wds@fpcmartinsvilleVA.org

Spencer Koger, Director of Music, adultmusic@fpcmartinsvilleVA.org

Peter Marshall, Worship Technology Coordinator,

worshiptechnology@fpcmartinsvilleVA.org

THE SESSION

Clerk: Liz Ferrell

Treasurer: Henry Moore

Class of 2025

Ron Rebman: Mission/Outreach

Janet Fentress: Worship

Monica Stevens: Christian Education

Class of 2026

Billy Kirby: Administration

Susan Pilson: Congregational Care and Fellowship

Anne Madonia: Think Tank

Class of 2027

Nancy Moore: Stewardship

Johnny Pinkard: Facilities

Judy King: Worship (co-chair)

TRUSTEES

2025: William Kirby, Gale Legg

2026: Sharon Kirby, Dru Rothrock

2027: Duke Ferrell, Joe Williams

Copyright © 2025 First Presbyterian Church, Martinsville, VA, All rights reserved.

Want to change how you receive these emails?

You can [update your preferences](#) or [unsubscribe from this list](#)

